

Figure 1. Number of Chinook salmon captured, length and flow data recorded during the 2014 Tuolumne River seine surveys.

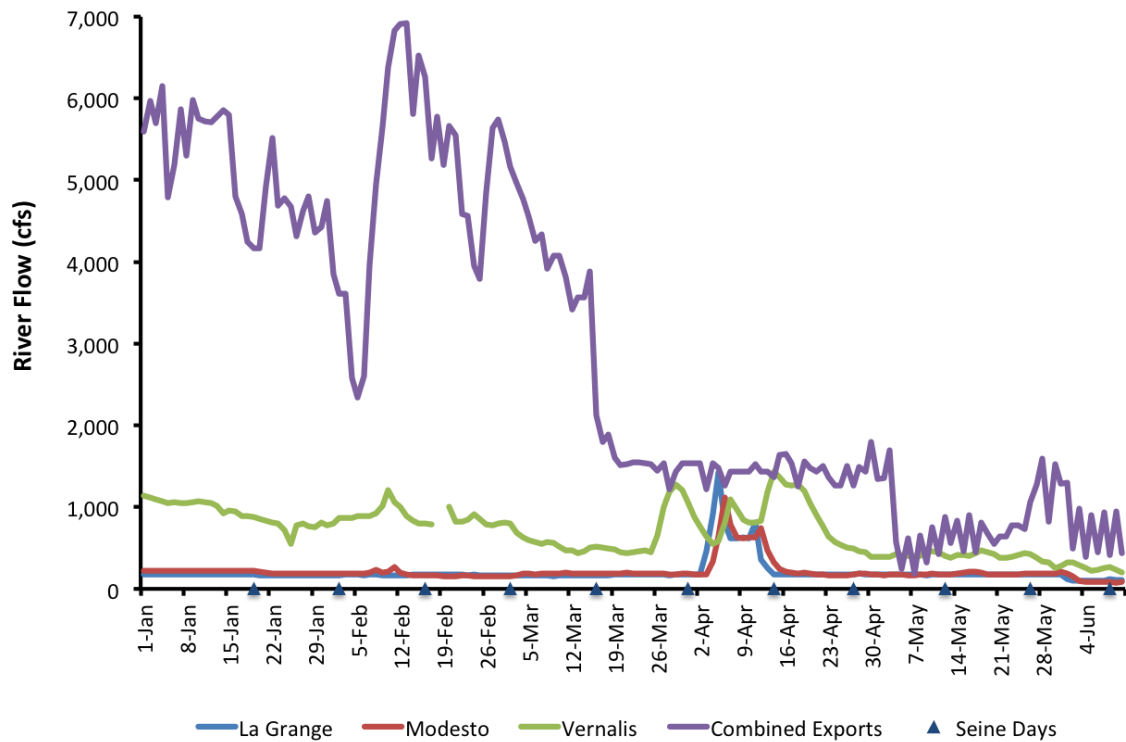


Figure 2. River flows and Delta exports during 2014 Tuolumne River seine surveys.

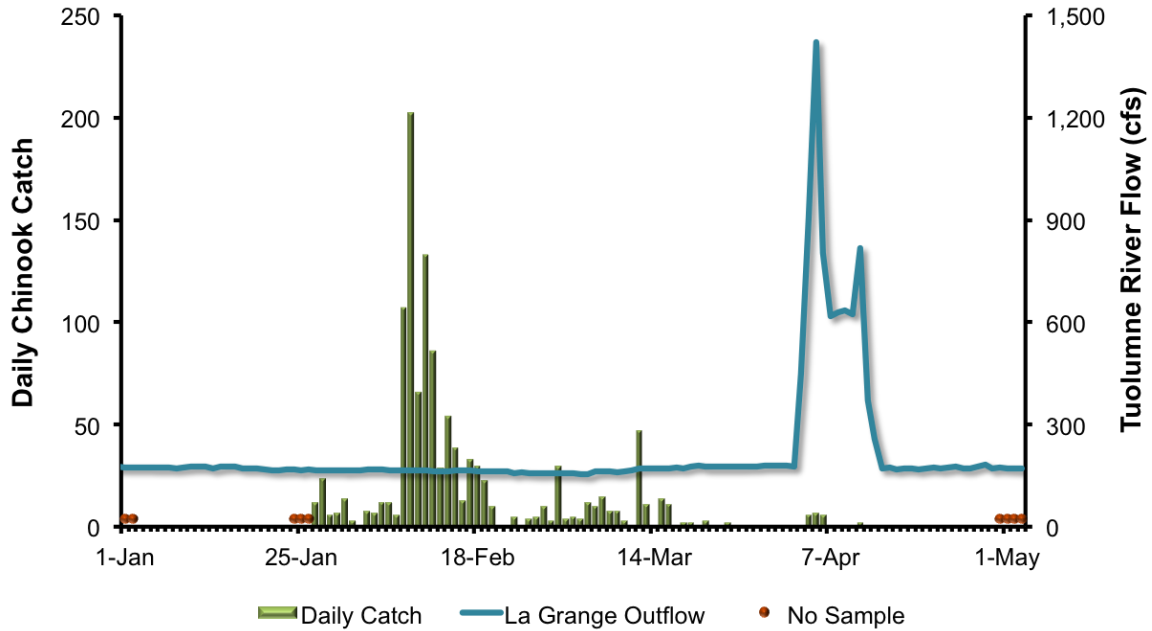


Figure 3. 2015 daily Chinook salmon catch at Waterford and Tuolumne River flow at La Grange. Total catch = 1,184 Chinook salmon.

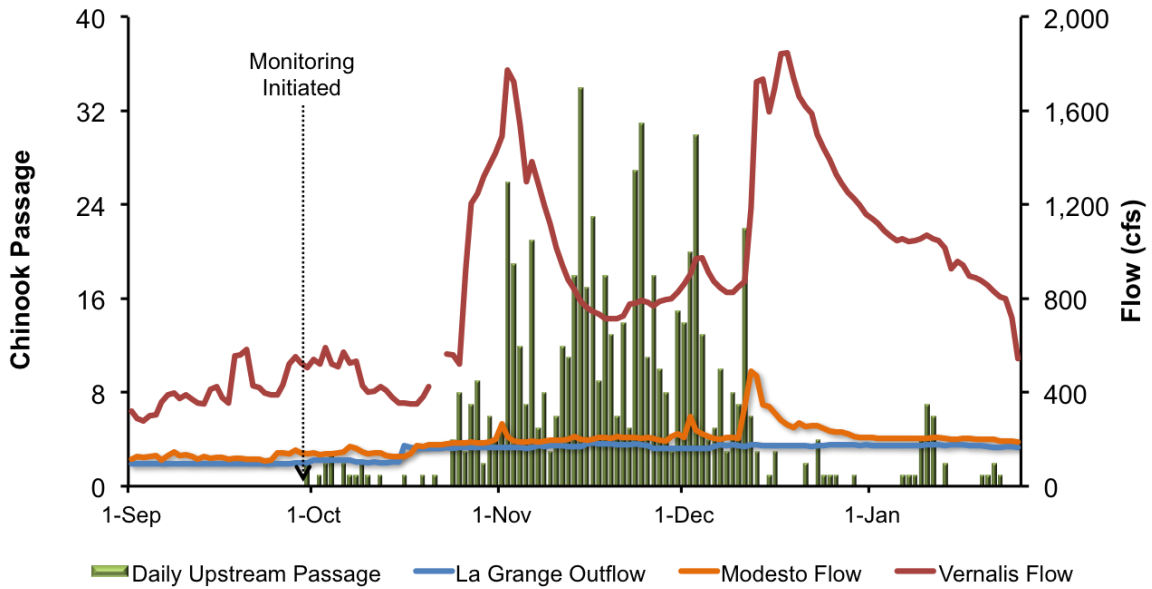


Figure 4. Daily upstream Chinook passage at the Tuolumne River Weir in relation to daily average flows (cfs) recorded in the Tuolumne River at La Grange (LGN) and Modesto (MOD), and in the San Joaquin River at Vernalis (VNS) in 2014/15. Season total of Chinook detections = 663. No *O. mykiss* detected in 2014/15.